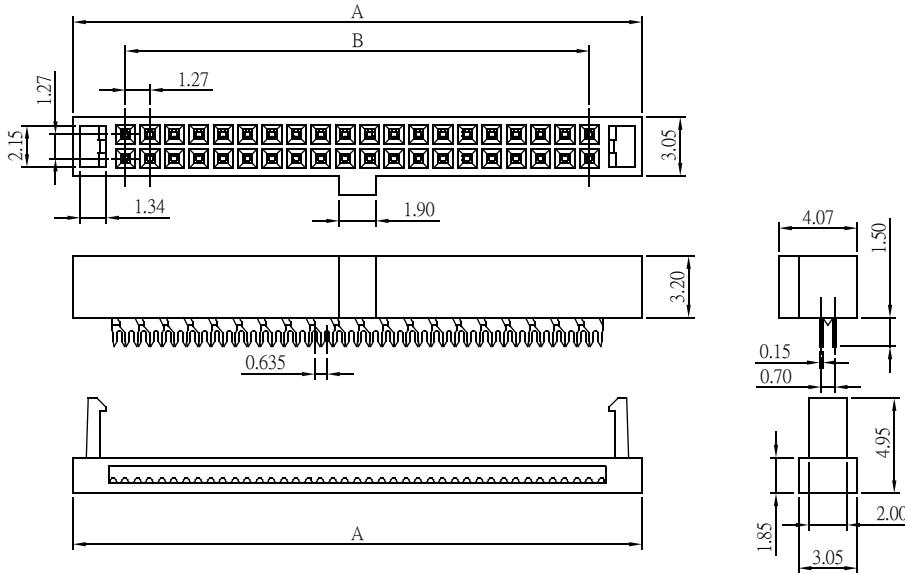
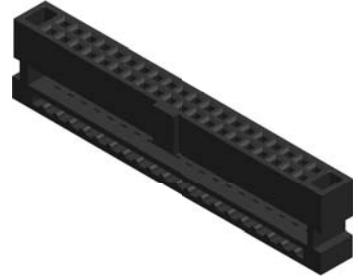




## IDC Socket 1.27x1.27mm

**Specifications**  
 Current Rate: 1 AMP  
 Insulation Resistance: 1000MΩ Min  
 Contact Resistance: 20mΩ Max  
 Dielectric Voltage: 500V AC for one minute  
 Operation Temperature: -40°C to +65°C

**Material**  
 Insulator: Polyester, UL 94V-0  
 ©Standard: PBT  
 Terminal: Copper Alloy



©Mate with flat cable Pitch 0.635 mm

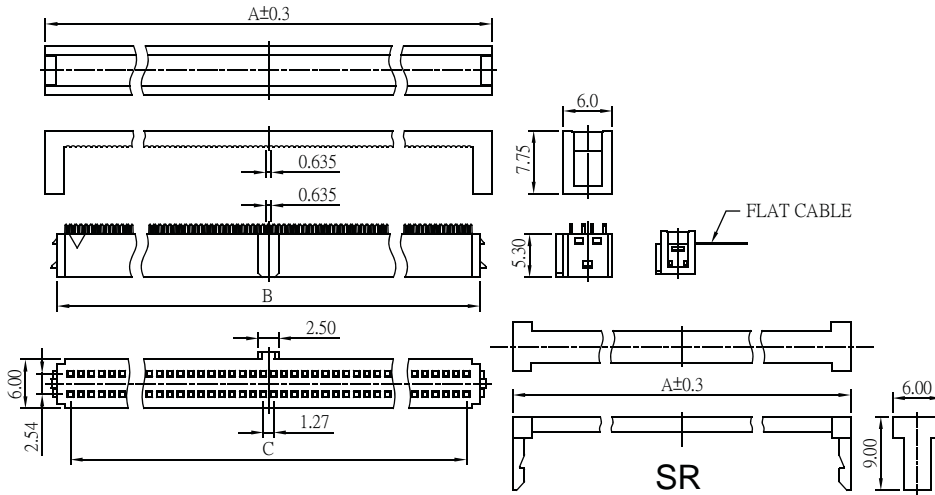
No. of Contacts	Dim. A	Dim. B
10	10.54	5.08
12	11.81	6.35
20	16.89	11.43
26	20.70	15.24
30	23.24	17.78
34	25.78	20.32
40	29.59	24.13
44	32.13	26.67
50	35.94	30.48
60	42.29	36.83
68	47.37	41.91
80	54.99	49.53

Part No.: IDC4-XX-L

## IDC Socket 1.27x2.54mm

**Specifications**  
 Current Rate: 1 AMP  
 Insulation Resistance: 1000MΩ Min  
 Contact Resistance: 20mΩ Max  
 Dielectric Voltage: 500V AC for one minute  
 Operation Temperature: -40°C to +65°C

**Material**  
 Insulator: Polyester, UL 94V-0  
 ©Standard: PBT  
 Terminal: Copper Alloy

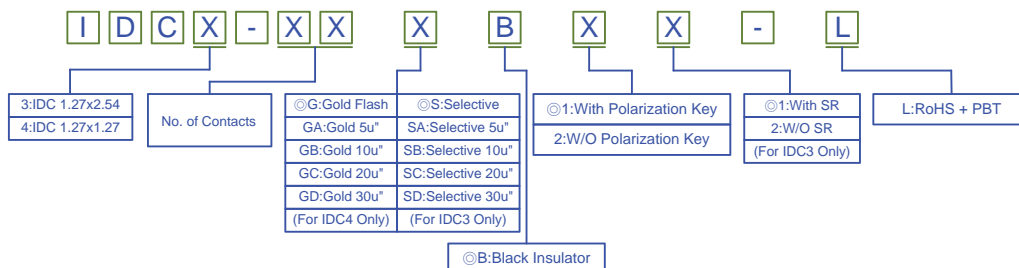


©Mate with flat cable Pitch 0.635 mm

No. of Contacts	Dim. A	Dim. B	Dim C
10	11.35	8.45	5.08
16	15.16	12.26	8.89
20	17.70	14.80	11.43
26	21.51	18.61	15.24
30	24.05	21.15	17.78
34	26.59	23.69	20.32
40	30.40	27.50	24.13
50	36.75	33.85	30.48
60	43.10	40.20	36.83
68	48.18	45.28	41.91
80	55.80	52.90	49.53
100	68.50	65.60	62.23

Part No.: IDC3-XX-L

## ORDER INFORMATION



©Standard Recommended

DC Socket

RoHS

CONNECTOR MANUFACTURER