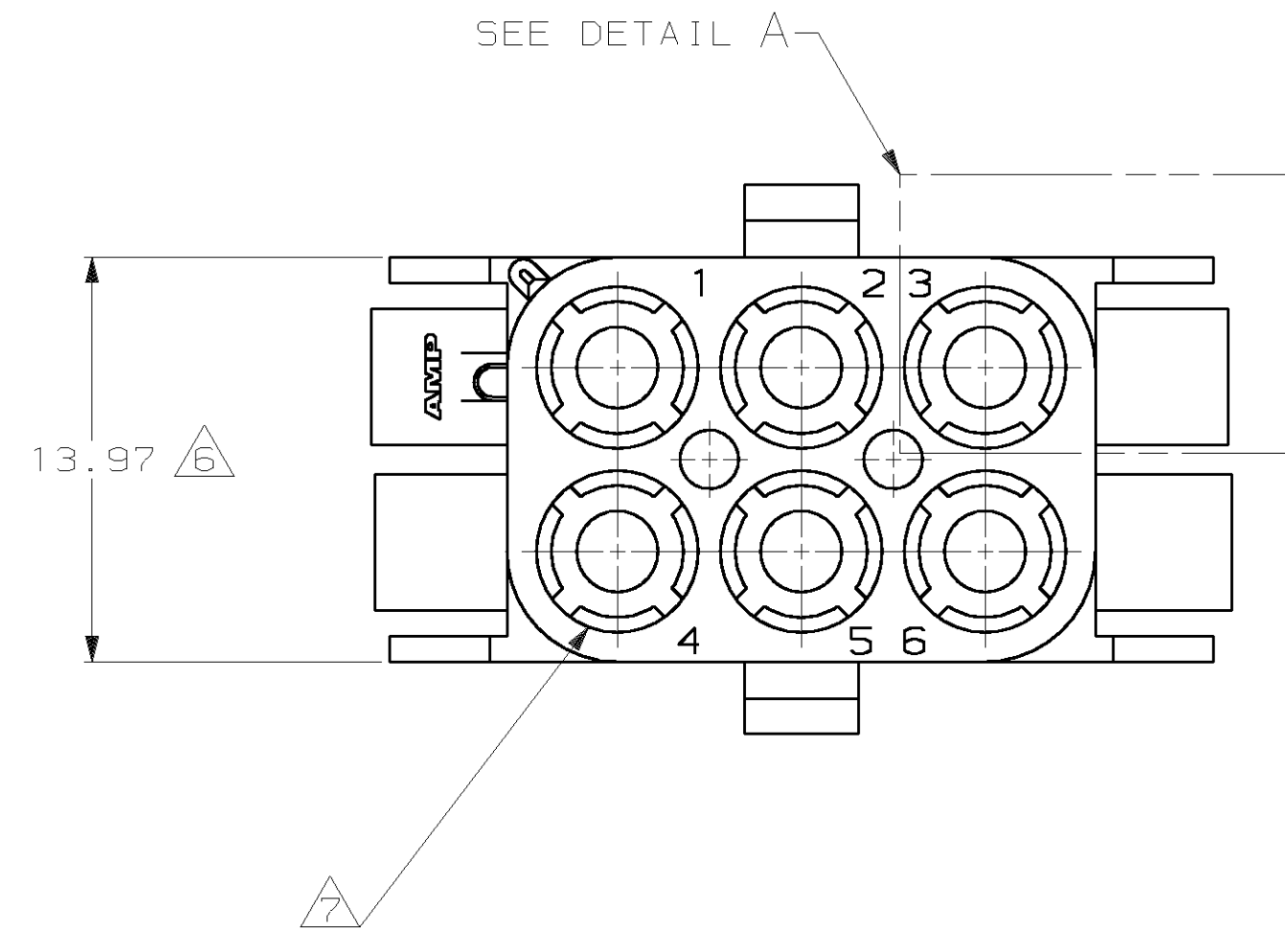
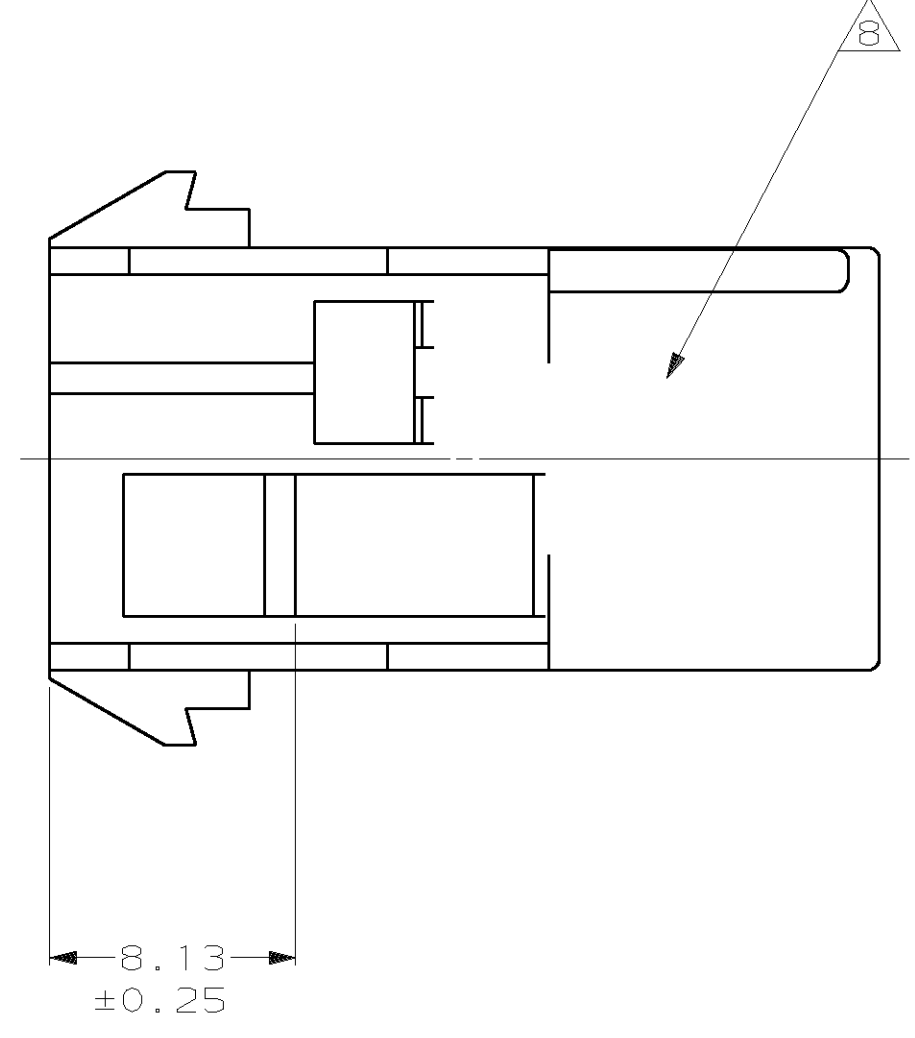
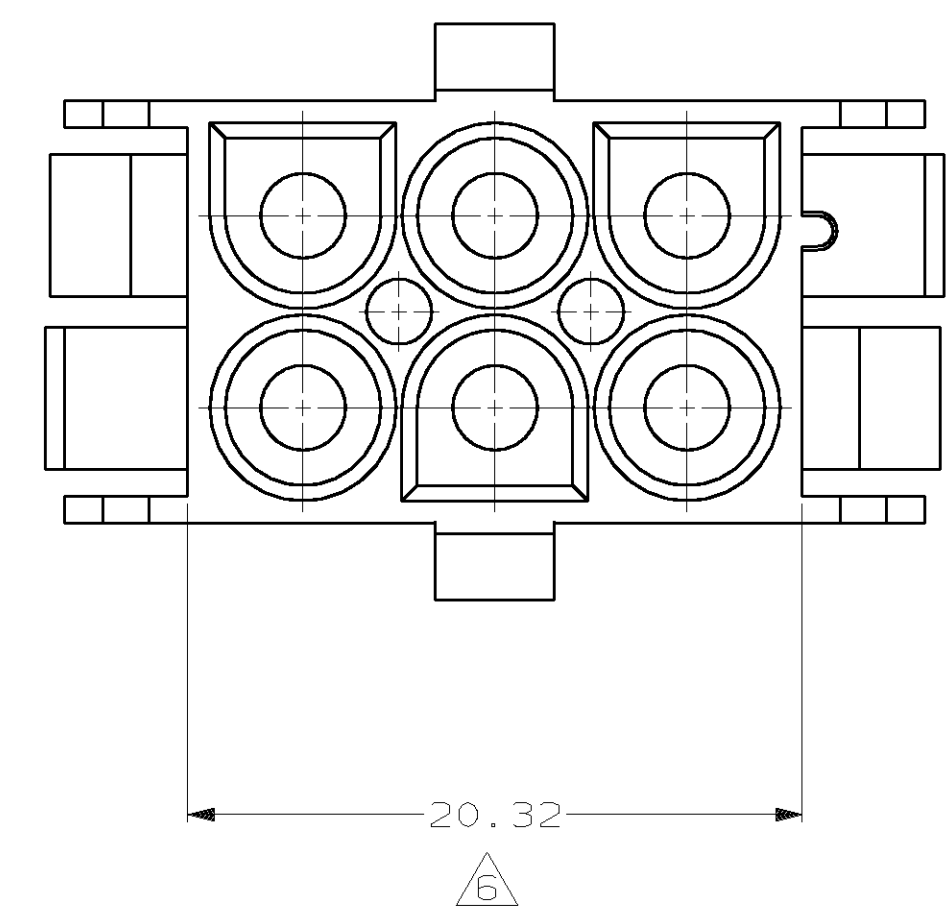
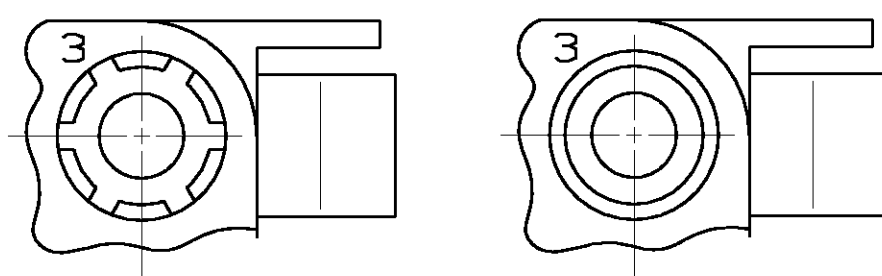


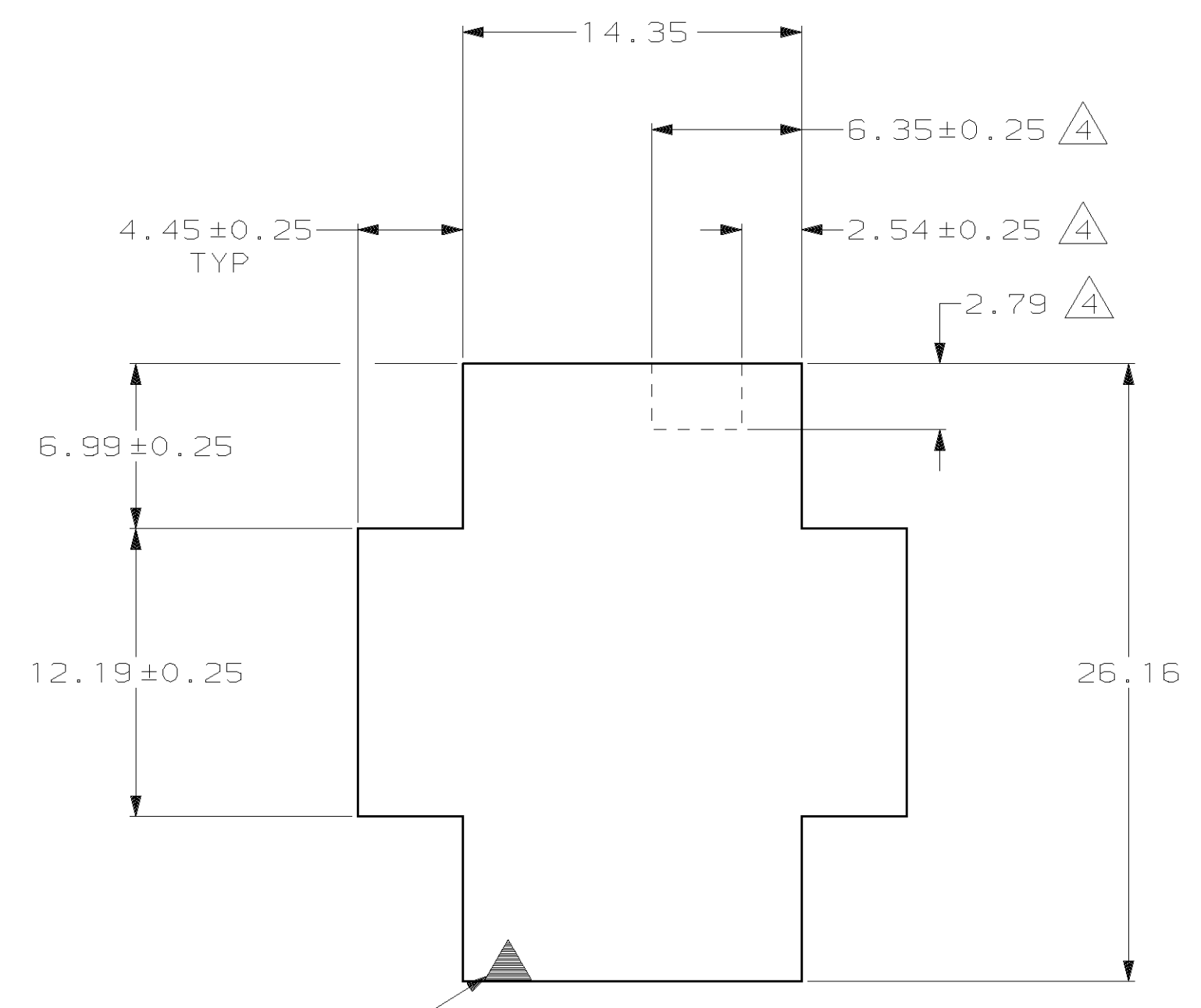
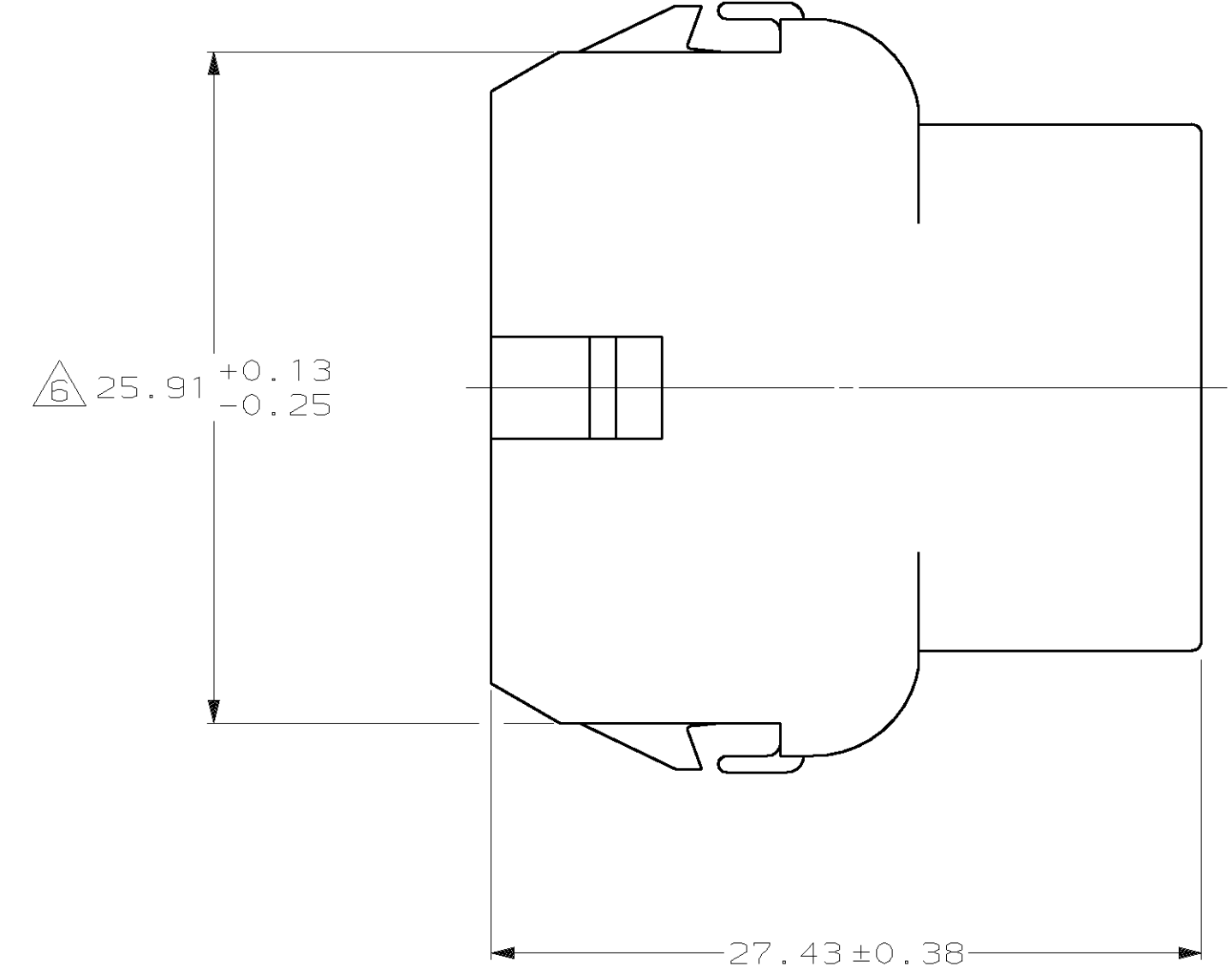
| LOC |    | DIST |  | P |  | ZONE |  | LTR |  | REVISIONS |                         | DATE      | APPD     |
|-----|----|------|--|---|--|------|--|-----|--|-----------|-------------------------|-----------|----------|
| CM  | 53 |      |  |   |  |      |  |     |  | W         | REV PER EC 0G1B-0229-98 | 17-FEB-99 | JH<br>RS |



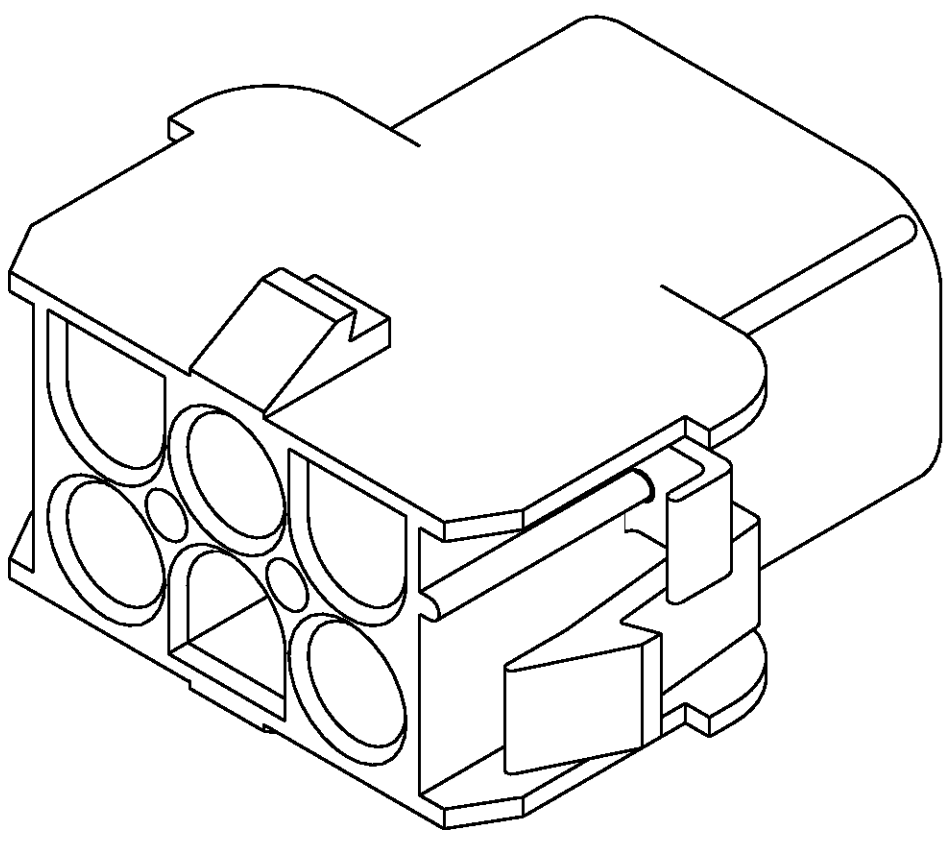
- MATES WITH APPROPRIATE UNIVERSAL MATE-N-LOK™ PLUG.
  - RECOMMENDED PANEL THICKNESS 0.76 - 2.29.
  - PANEL MUST BE PUNCHED SO THAT THE HOUSING ENTERS THE PANEL IN THE SAME DIRECTION AS THE PUNCH.
- △4 OPTIONAL FOR KEYING HOUSING IN PANEL.
  - △5 CIRCUIT NUMBER 1 LOCATION.
  - △6 DIMENSION INDICATED IS AS MOLDED. ADDITIONAL GROWTH DUE TO SUBSEQUENT MOISTURE ABSORPTION MAY OCCUR.
  - △7 FOUR RIBS EQUALLY SPACED, NO SPECIFIC ORIENTATION. NO RIBS OR SIX RIBS EQUALLY SPACED, NO SPECIFIC ORIENTATION, OPTIONAL.
  - △8 UNDERWRITERS RECOGNIZED COMPONENT LOGO AND CSA CERTIFICATION LOGO TO BE LOCATED ONCE EACH ON SIDE OF HOUSING.



DETAIL A  
 OPTIONAL CONSTRUCTIONS



RECOMMENDED PANEL CUT OUT



3-DIMENSIONAL MODEL  
 NTS

| MM   | IN   | MM    | IN    |
|------|------|-------|-------|
| 6.35 | .250 | 27.43 | 1.080 |
| 4.45 | .175 | 26.16 | 1.030 |
| 2.79 | .110 | 25.91 | 1.020 |
| 2.54 | .100 | 20.32 | .800  |
| 2.29 | .090 | 14.35 | .565  |
| 0.76 | .030 | 13.97 | .550  |
| 0.38 | .015 | 12.19 | .480  |
| 0.25 | .010 | 8.13  | .320  |
| 0.13 | .005 | 6.99  | .275  |
| MM   | IN   | MM    | IN    |

CONVERSION TABLE

**METRIC**

THIS DRAWING IS A CONTROLLED DOCUMENT FOR AMP INCORPORATED. IT IS SUBJECT TO CHANGE AND THE CONTROLLING ENGINEERING ORGANIZATION SHOULD BE CONTACTED FOR THE LATEST REVISION.

|  |  |                           |  |   |  |
|--|--|---------------------------|--|---|--|
| DO NOT SCALE PRINT. UNLESS SPECIFIED DIMENSIONS IN mm [INCHES] |  | DR 6-29-92<br>K. WHITAKER |  | 350781-1<br>PART NO                               |  |
| TOLERANCES - ON:   |  | CHK 6-29-92<br>R. SWING   |  | AMP AMP Incorporated<br>Harrisburg, PA 17105-3508 |  |
| 2 PLC DEC ± 0.13   |  | APPD 7-2-92<br>D. SELF    |  | NAME  |  |
| 3 PLC DEC ± -  |  | APPD 7-2-92<br>D. SELF    |  | CAP, 6 CIRCUIT,<br>UNIVERSAL MATE-N-LOK™          |  |
| ANGLES ± 1°0'  |  | PRODUCT SPEC              |  | SIZE  |  |
| MATERIAL   |  | APPLICATION SPEC          |  | CAGE CODE   |  |
| NYLON, UL 94V-0  |  | -                         |  | 00779   |  |
| FINISH   |  | WEIGHT                    |  | DRAWING NO  |  |
| -  |  | -                         |  | C-350781  |  |
| SCALE  |  | SHEET                     |  | 1 OF 1  |  |
| 4:1  |  | 1 OF 1                    |  | CUSTOMER DRAWING                                  |  |