

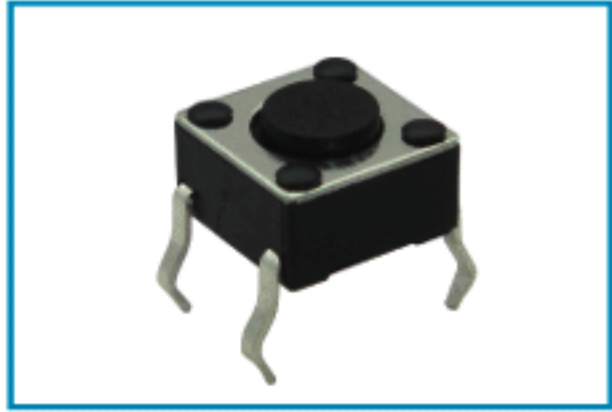
06,07 Series Tact Switches (SMD, Taping, Tape & Reel optional)

SPECIFICATION

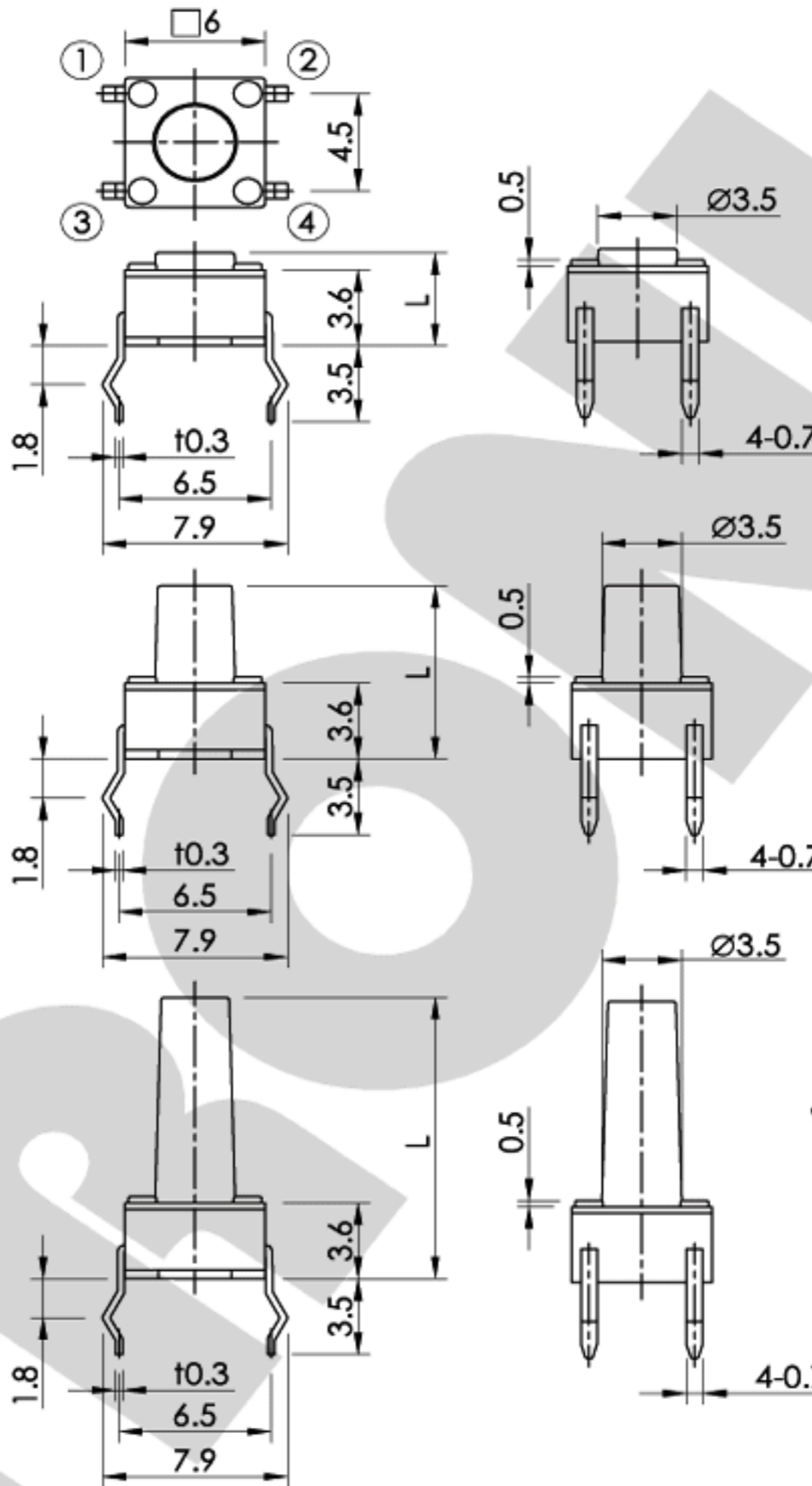
Rating : 50mA 12V DC.
 Insulation resistance : >100MΩ 250V DC.
 Withstand voltage : 250V AC for 1 minute.
 Contact resistance : <100mΩ.
 Soldering temperature : 240°C Max. for 3 Sec.

Mechanical life : 100,000 Cycles.
 Electrical life : 100,000 Cycles.
 Ambient temperature : -25°C ~ +70°C.
 Ambient humidity : <85% RH.
 Operating force : 130, 160, 250±50g.

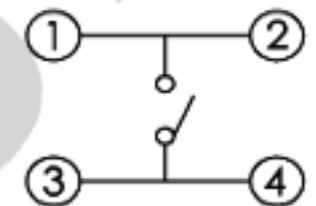
0643~0660



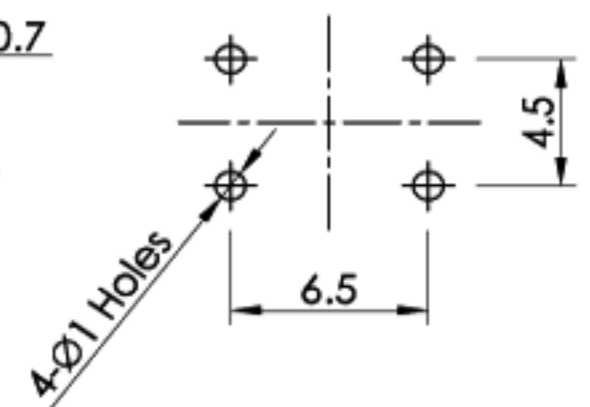
MODEL NO.	L
0643	4.3
0650	5.0
0660	6.0



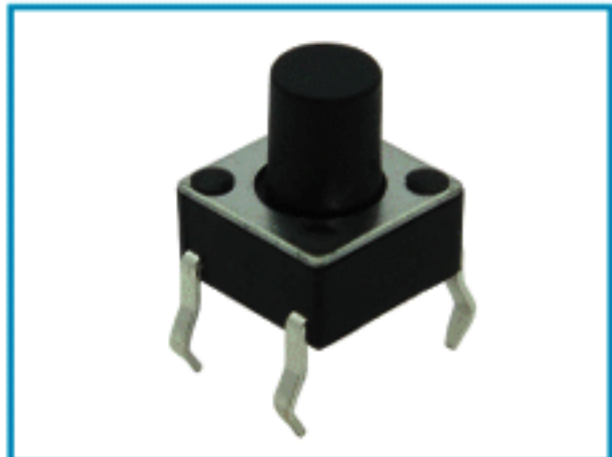
SCHEMATIC



P.C.B. LAYOUT



0670~0695



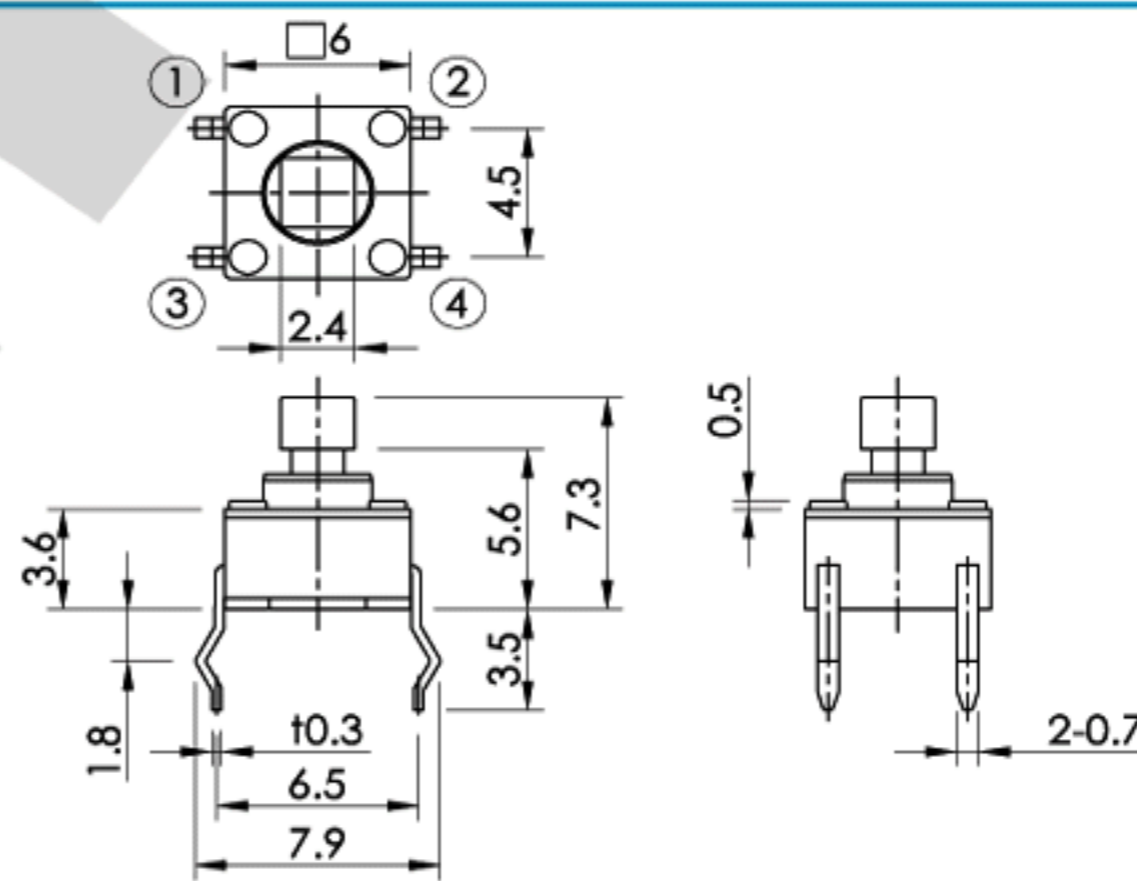
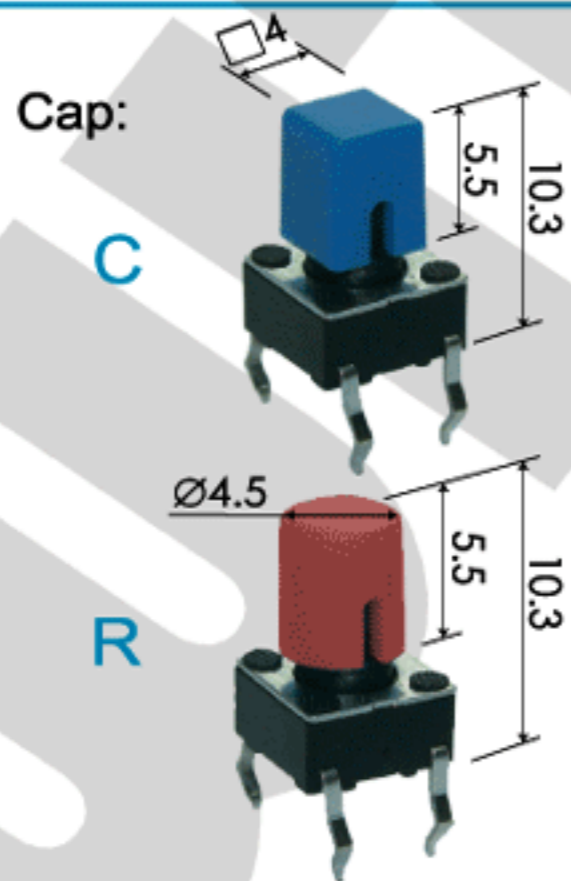
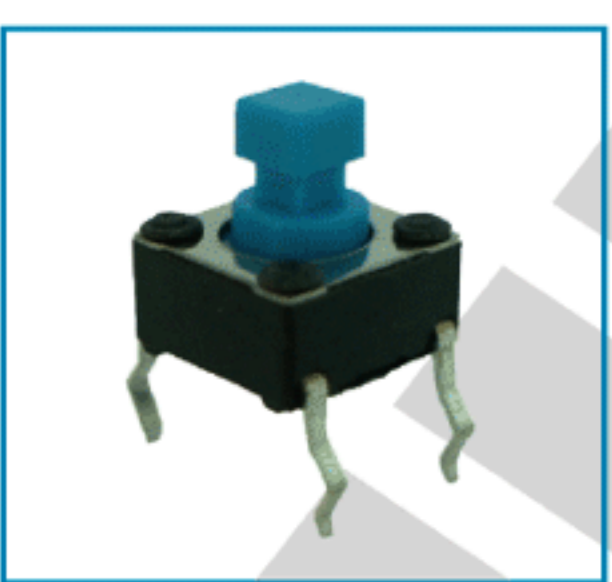
MODEL NO.	L
0670	7.0
0680	8.0
0690	9.0
0695	9.5

0611~0621

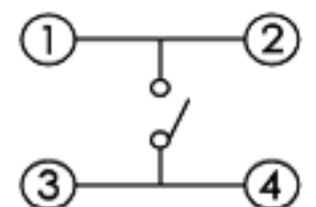


MODEL NO.	L
0611	11.0
0612	12.0
06125	12.5
0613	13.0
06135	13.5
0614	14.0
0615	15.0
0616	16.0
0617	17.0
0621	21.0

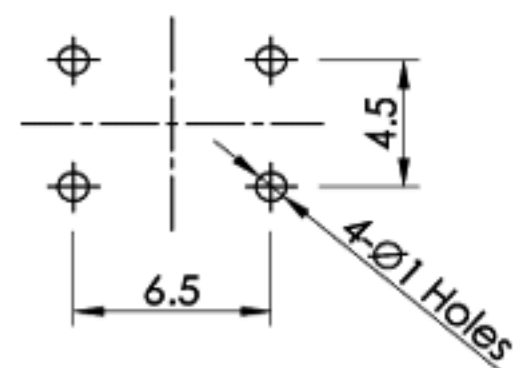
0673



SCHEMATIC



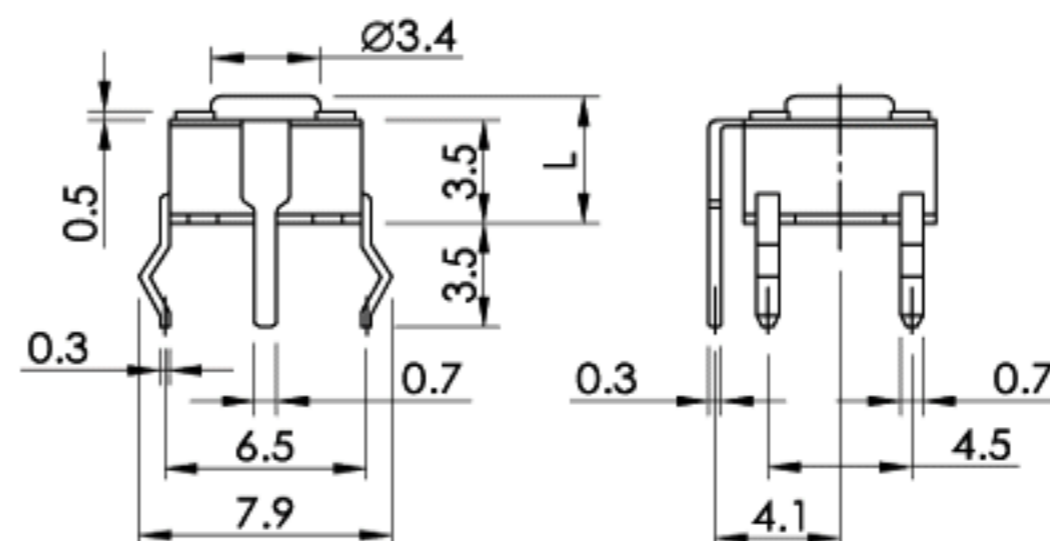
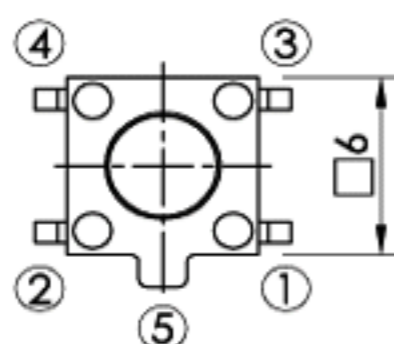
P.C.B. LAYOUT



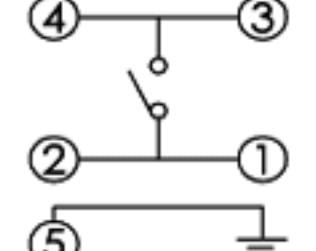
0643G (Grounding) 0650G



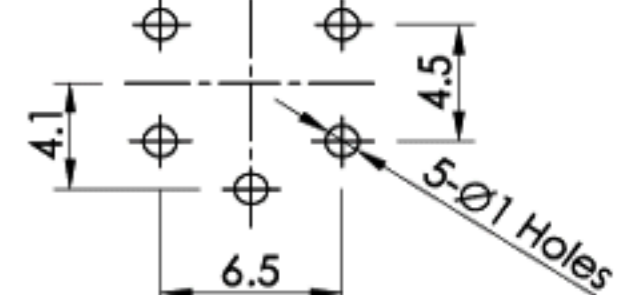
MODEL NO.	L
0643G	4.3
0650G	5.0



SCHEMATIC

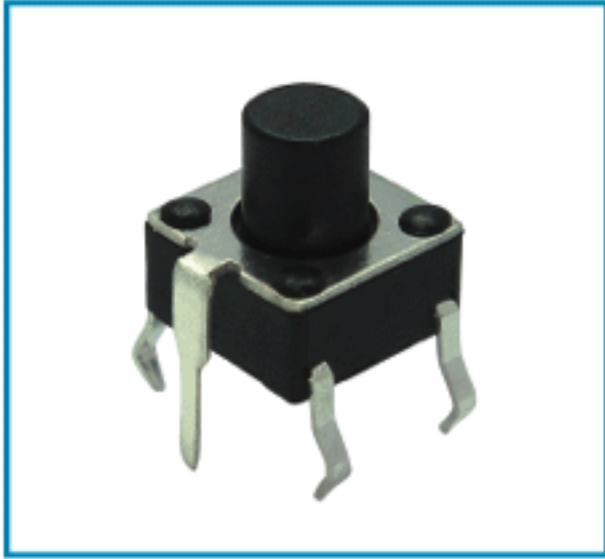


P.C.B. LAYOUT

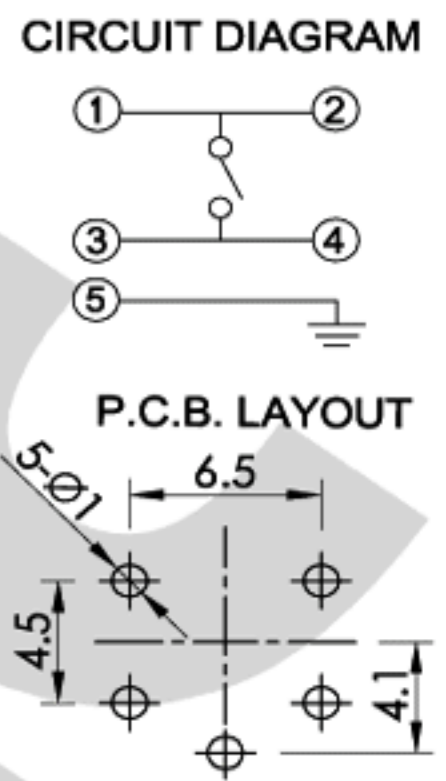
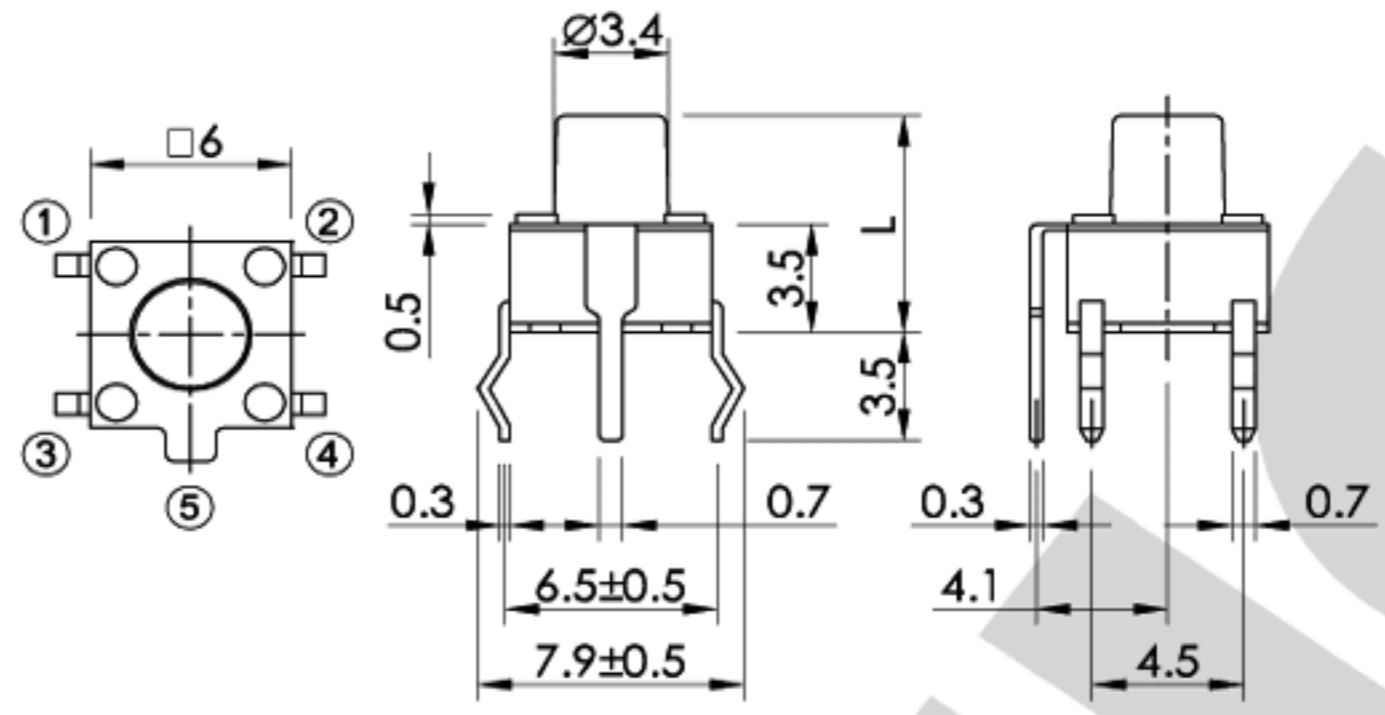


06,07 Series Tact Switches

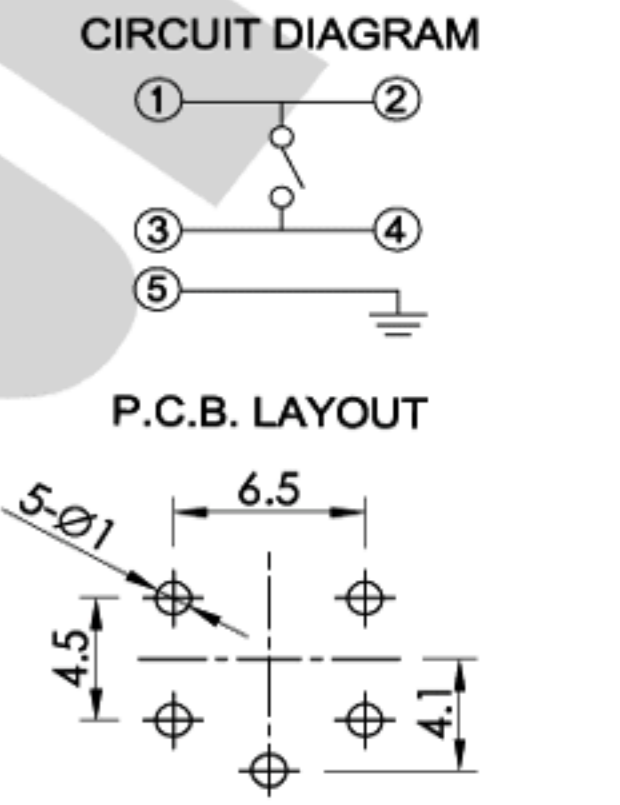
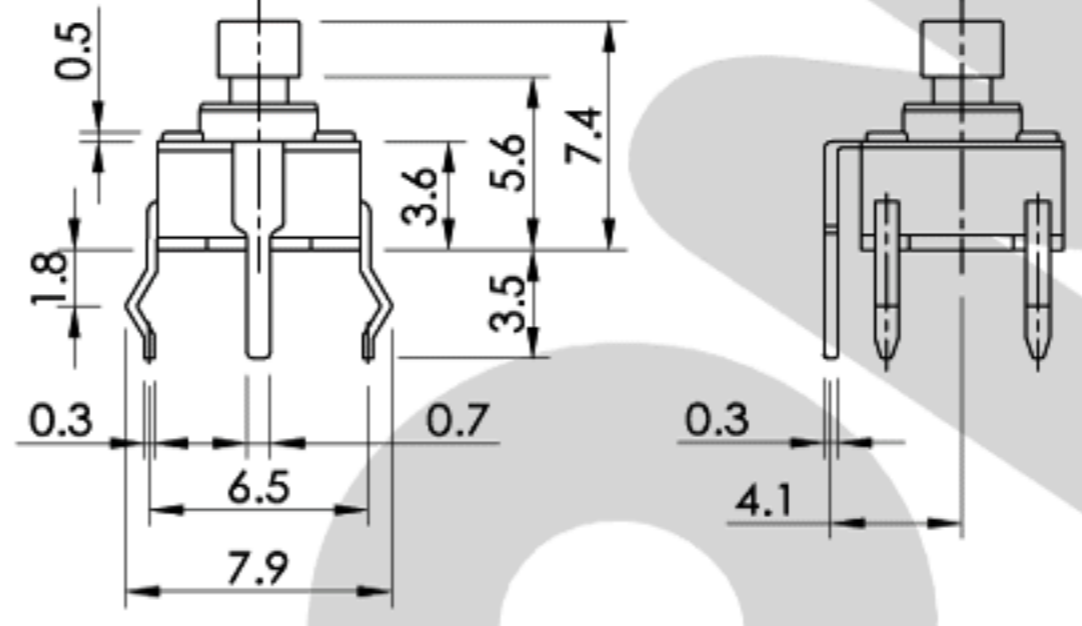
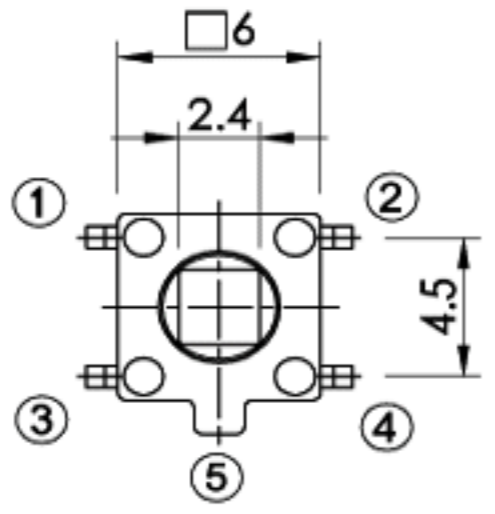
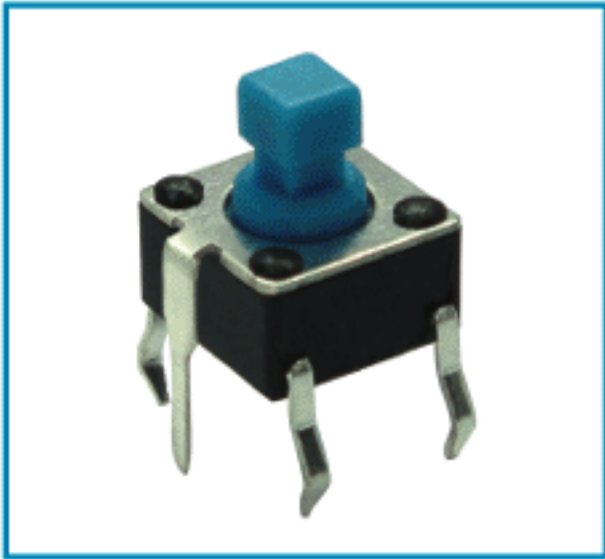
0670G,0680G,0695G, (Grounding)
06125G,06135G



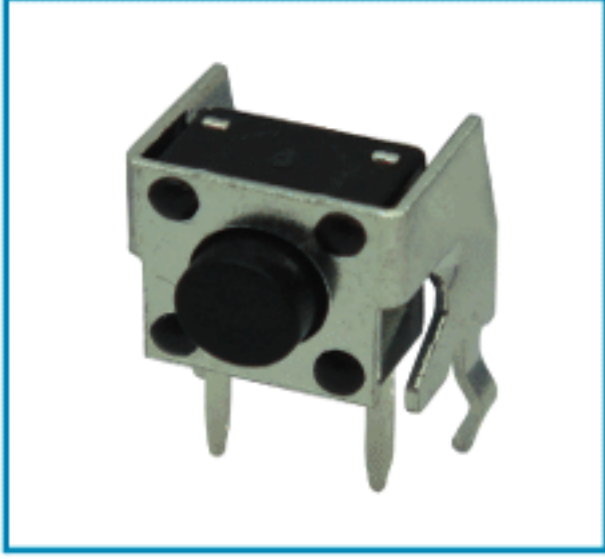
MODEL NO.	L
0670G	7.0
0680G	8.0
0695G	9.5
06125G	12.5
06135G	13.5



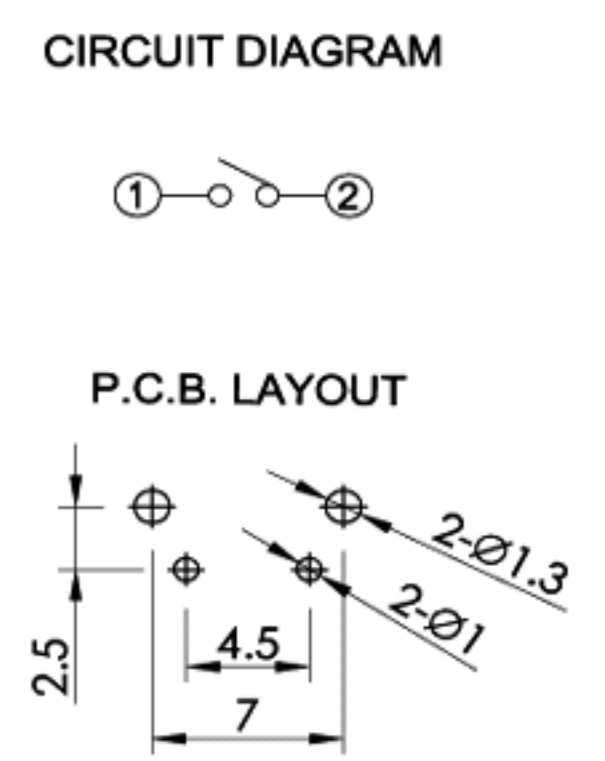
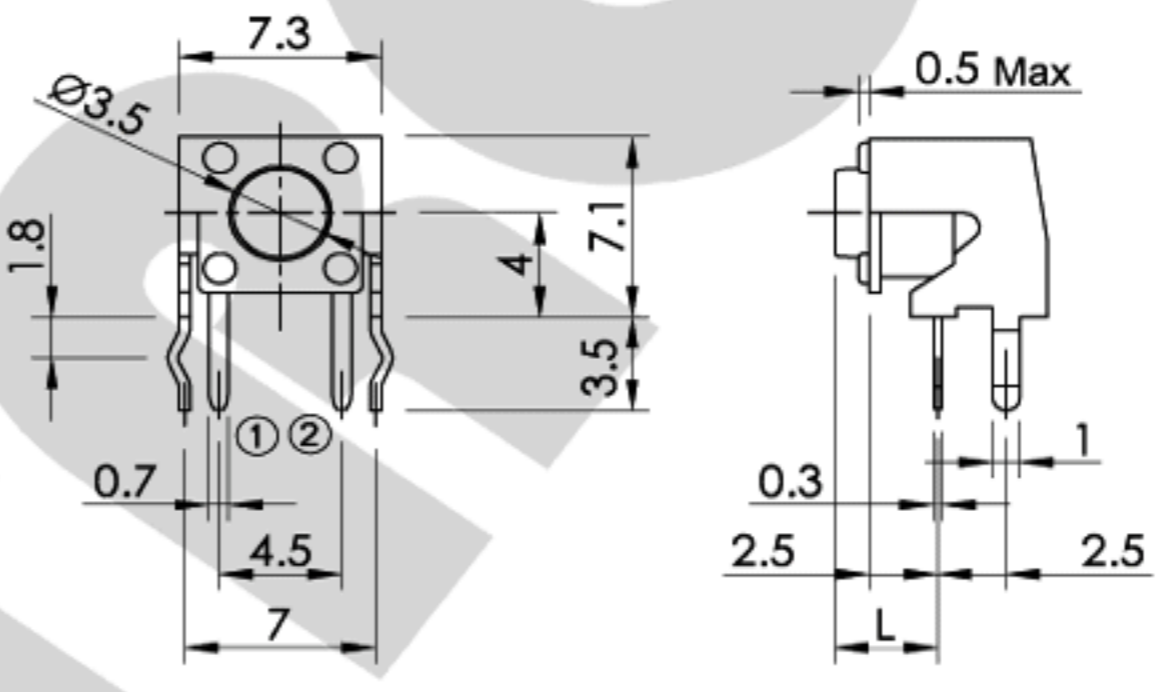
0673G (Grounding)



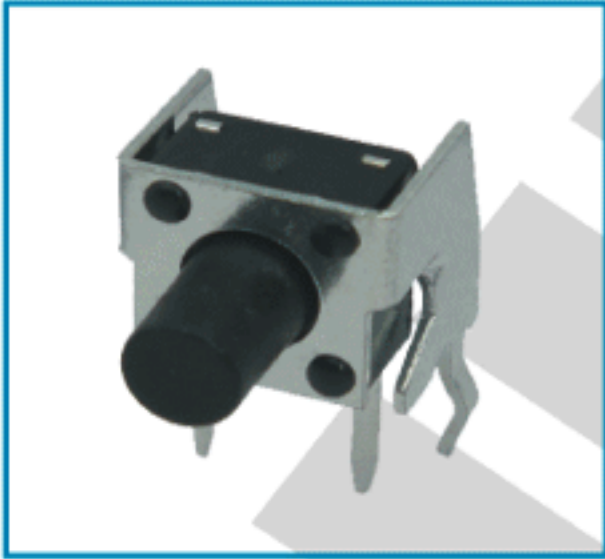
0743, 0750



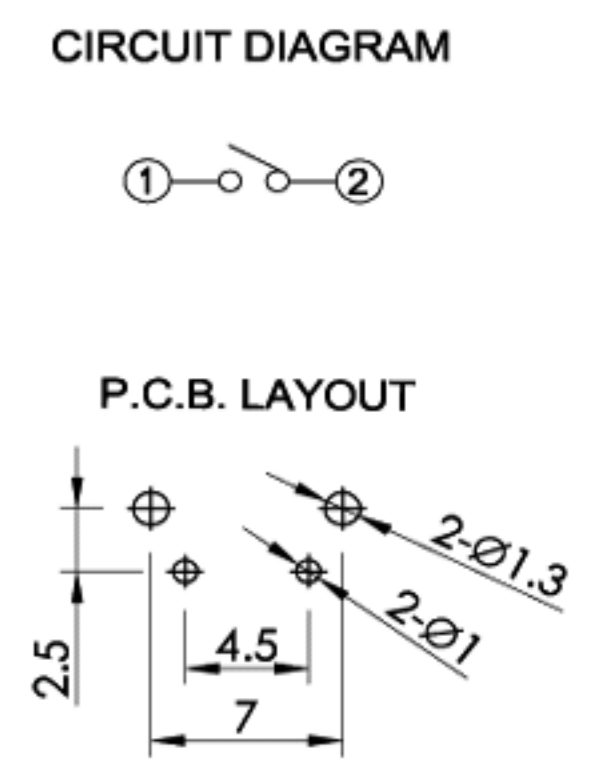
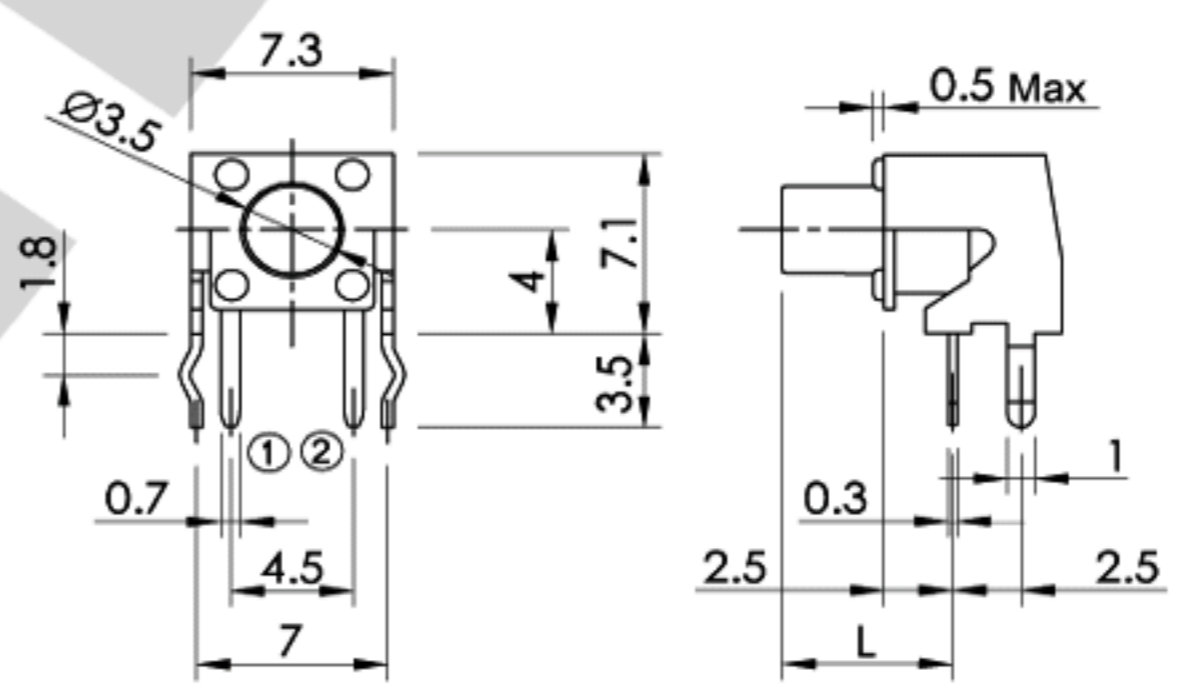
MODEL NO.	L
0743	3.15
0750	3.85



0770, 0780, 0795



MODEL NO.	L
0770	5.85
0780	6.85
0795	8.35
07125	11.35
07135	12.35



0773

