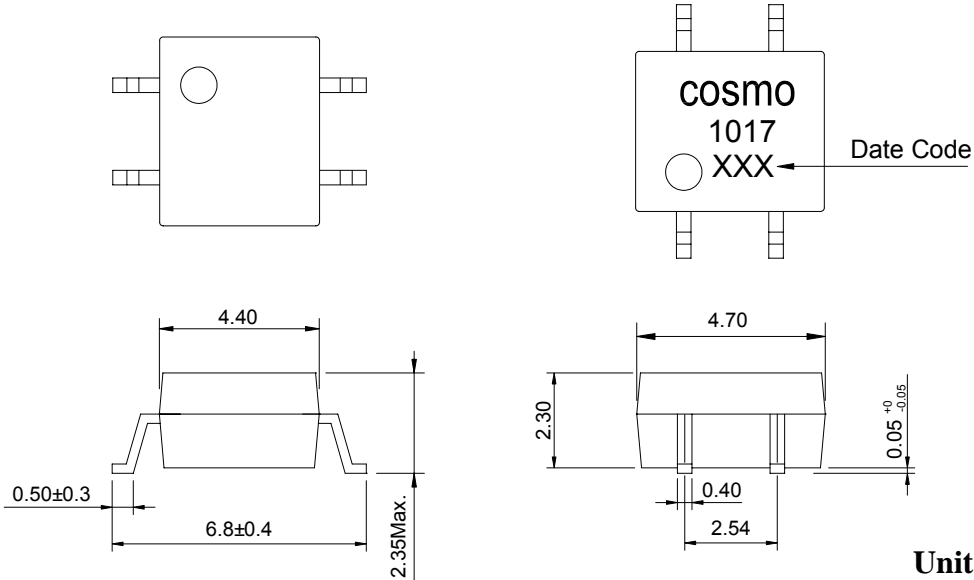


PRODUCT SPECIFICATION

DATE : 01/14/2005

| | | | |
|---|---|--------------|--------|
| cosmo ELECTRONICS CORPORATION | SOLID STATE RELAY - MOSFET OUTPUT KCP1017 | 62M00018 | REV. 2 |
| | | SHEET 1 OF 7 | |

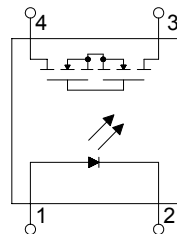
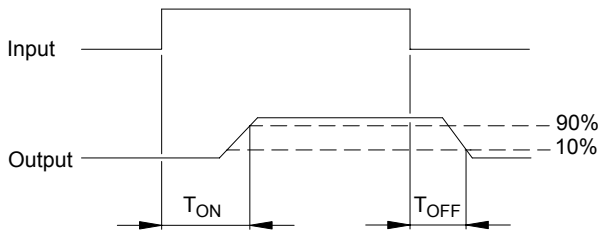
● **OUTSIDE DIMENSION :**



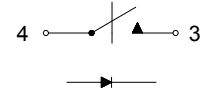
Unit : mm

Tolerance : ±0.2mm

● **Turn on / Turn off time**



1 FORM A
NORMALLY OPEN



● **Absolute Maximum Ratings**

(Ta=25°C)

| Emitter (Input) | | Detector (Output) | |
|----------------------------------|----------------------|---------------------------------|-----------------|
| Reverse Voltage | 5.0V | Output Breakdown Voltage | ± 60V |
| Continuous Forward Current | 50mA | Continuous Load Current | ± 130mA |
| Peak Forward Current | 1A | Power Dissipation | 450mW |
| Power Dissipation | 75mW | | |
| Derate Linearly from 25°C | 1.3mW/°C | | |
| General Characteristics | | | |
| Isolation Test Voltage | 1500VACrms | Storage Temperature Range | -40°C to +125°C |
| Isolation Resistance | | Operating Temperature Range ... | -40°C to +85°C |
| Vio=500V , Ta=25°C | ≥ 10 ¹⁰ Ω | Junction Temperature | 100°C |
| Total Power Dissipation | 500mW | Soldering Temperature , | |
| Derate Linearly from 25°C | 2.5mW/°C | 2mm from case , 10 sec | 260°C |

PRODUCT SPECIFICATION

DATE : 01/14/2005

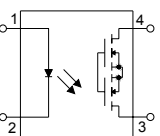
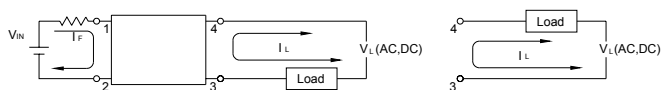
| | | | |
|---|---|--------------|------|
| cosmo ELECTRONICS CORPORATION | SOLID STATE RELAY - MOSFET OUTPUT KCP1017 | 62M00018 | REV. |
| | | SHEET 2 OF 7 | 2 |

● Electro-optical Characteristics

(Ta=25°C)

| Parameter | Symbol | Conditions | Min. | Typ. | Max. | Unit. |
|--------------------------|-------------------|--|------|------|------|---------------|
| Emitter (Input) | | | | | | |
| Forward Voltage | V_F | $I_F=10\text{mA}$ | | 1.2 | 1.5 | V |
| Operation Input Current | $I_{F\text{ON}}$ | $V_L=\pm 20\text{V}$, $I_L=100\text{mA}$, $t=10\text{ms}$ | | 0.5 | 1.0 | mA |
| Recovery Input Voltage | $V_{F\text{OFF}}$ | $V_L=\pm 20\text{V}$, $I_L \leq 5\mu\text{A}$ | 0.5 | 0.9 | | V |
| Detector (Output) | | | | | | |
| Output Breakdown Voltage | V_B | $I_B=50\mu\text{A}$ | 60 | | | V |
| Output Off-State Leakage | $I_{T\text{OFF}}$ | $V_T=100\text{V}$, $I_F=0\text{mA}$ | | 0.2 | 1 | μA |
| I/O Capacitance | C_{ISO} | $I_F=0$, $f=1\text{MHz}$ | | 6 | | pF |
| ON Resistance | R_{ON} | $I_L=100\text{mA}$, $I_F=10\text{mA}$ | | 7 | 16 | Ω |
| Turn-On Time | T_{ON} | $I_F=10\text{mA}$, $V_L=\pm 20\text{V}$ $t=10\text{ms}$, $I_L=\pm 100\text{mA}$ | | 0.2 | 1.0 | ms |
| Turn-Off Time | T_{OFF} | | | 0.3 | 1.5 | ms |

● Schematic and Wiring Diagrams

| Schematic | Output configuration | Load | Connection | Wiring Diagrams |
|---|----------------------|-------|------------|--|
|  | 1a | AC/DC | - |  |

PRODUCT SPECIFICATION

DATE : 01/14/2005

cosmo
ELECTRONICS CORPORATION

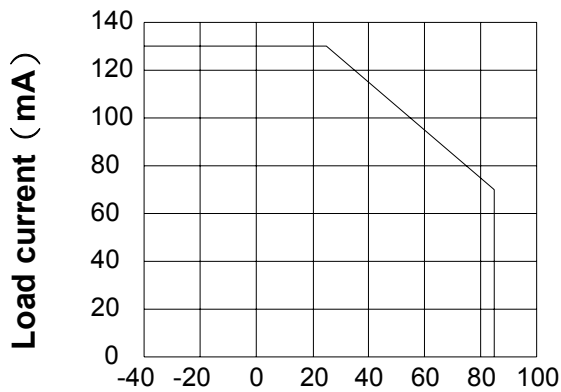
SOLID STATE RELAY - MOSFET OUTPUT
KCP1017

62M00018
SHEET 3 OF 7

REV.
2

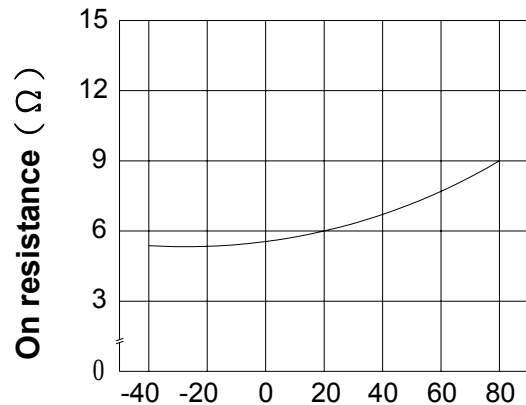
● Data Curve

Load current vs. ambient temperature
Allowable ambient Temperature :
-40°C to +85°C



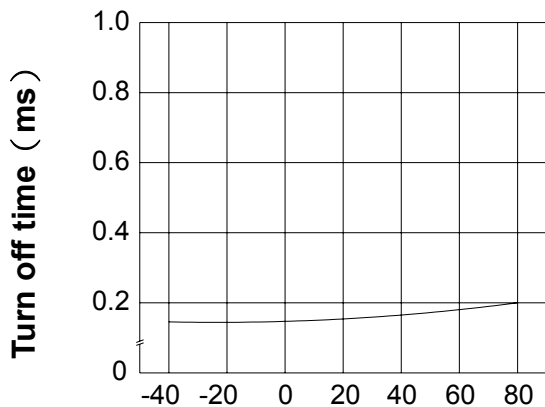
Ambient temperature Ta (°C)

On resistance vs. ambient temperature
across terminals 3 and 4 pin
LED current : 5mA
Continuous load current : 130mA (DC)



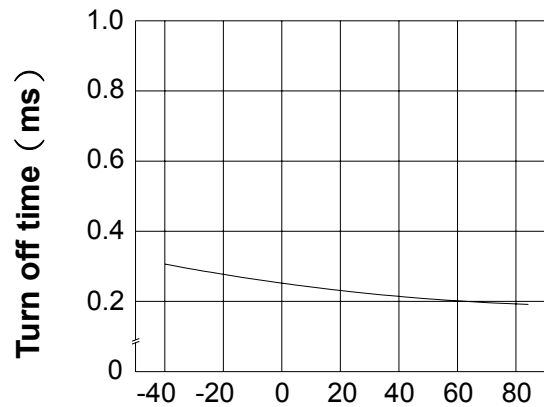
Ambient temperature Ta (°C)

Turn on time vs. ambient temperature
Load voltage 60V (DC)
LED current : 5mA
Continuous load current : 130mA (DC)



Ambient temperature Ta (°C)

Turn off time vs. ambient temperature
Load voltage 60V (DC)
LED current : 5mA
Continuous load current : 130mA (DC)



Ambient temperature Ta (°C)

PRODUCT SPECIFICATION

DATE : 01/14/2005

cosmo
ELECTRONICS CORPORATION

SOLID STATE RELAY - MOSFET OUTPUT
KCP1017

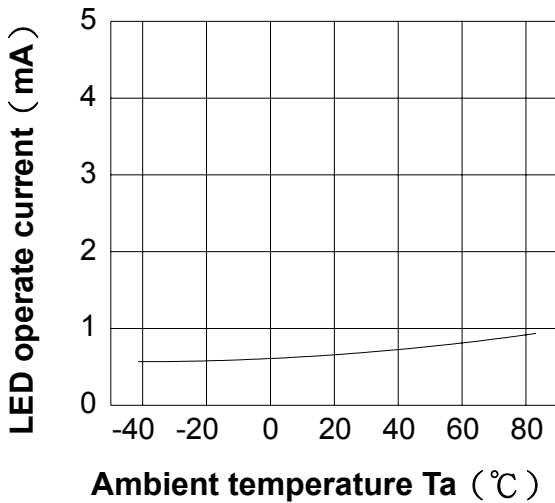
62M00018
SHEET 4 OF 7

REV.
2

LED operate current vs.
ambient temperature

Load Voltage : 60V (DC)

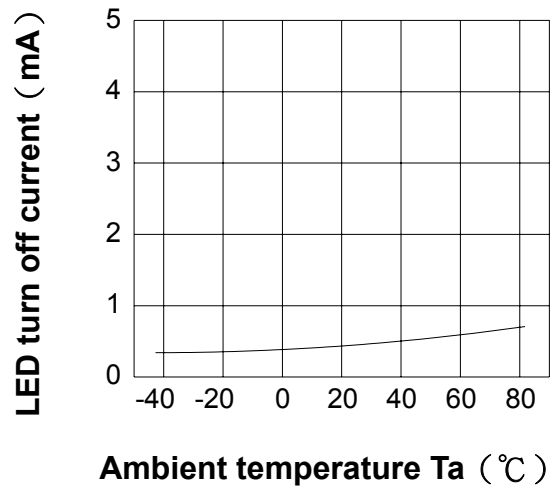
Continuous load current : 130mA (DC)



LED turn off current vs.
ambient temperature

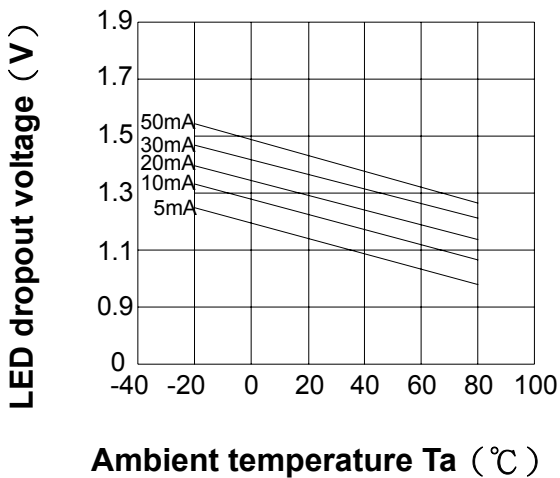
Load Voltage : 60V (DC)

Continuous load current : 130mA (DC)

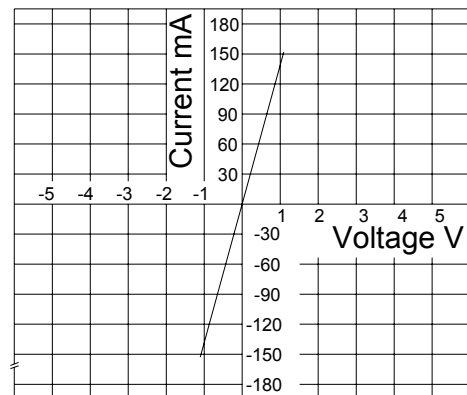


LED dropout voltage vs.
ambient temperature

LED current : 5 to 50mA



Voltage vs. current characteristics
of output at MOSFET portion
Measured portion : across terminals
3 and 4 pin
Ambient temperature : 25°C



PRODUCT SPECIFICATION

DATE : 01/14/2005

| | | | |
|---|---|--------------|-----------|
| cosmo ELECTRONICS CORPORATION | SOLID STATE RELAY - MOSFET OUTPUT KCP1017 | 62M00018 | REV. 2 |
| | | SHEET 5 OF 7 | |

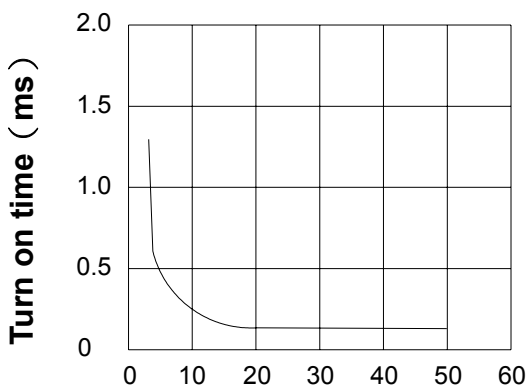
LED forward current vs. turn on time

Across terminals 3 and 4 pin

Load voltage : 60V (DC)

Continuous load current : 130mA (DC)

Ambient temperature : 25°C

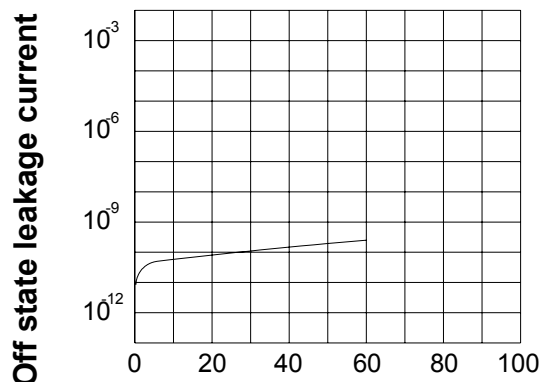


LED forward current (mA)

Off state leakage current

Across terminals 3 and 4 pin

Ambient temperature : 25°C



Load voltage (V)

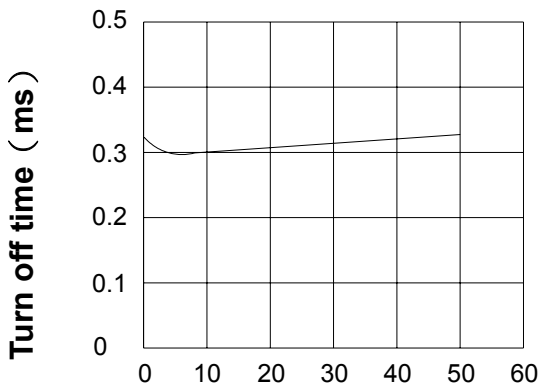
LED forward current vs. turn off time

Across terminals 3 and 4 pin

Load voltage : 60V (DC)

Continuous load current : 130mA (DC)

Ambient temperature : 25°C



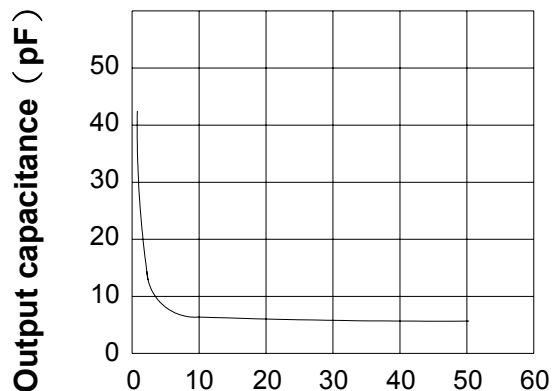
LED forward current (mA)

Applied voltage vs. output capacitance

Across terminals 3 and 4 pin

Frequency : 1MHz

Ambient temperature : 25°C



Applied voltage (V)

PRODUCT SPECIFICATION

DATE : 01/14/2005

cosmo
ELECTRONICS CORPORATION

SOLID STATE RELAY - MOSFET OUTPUT
KCP1017

62M00018
SHEET 6 OF 7

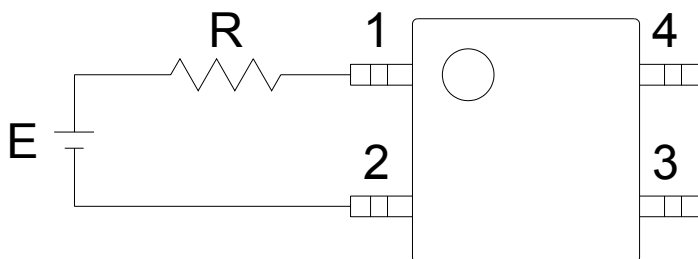
REV.
2

● USING METHODS

Examples of resistance value to control LED forward current (I_F)

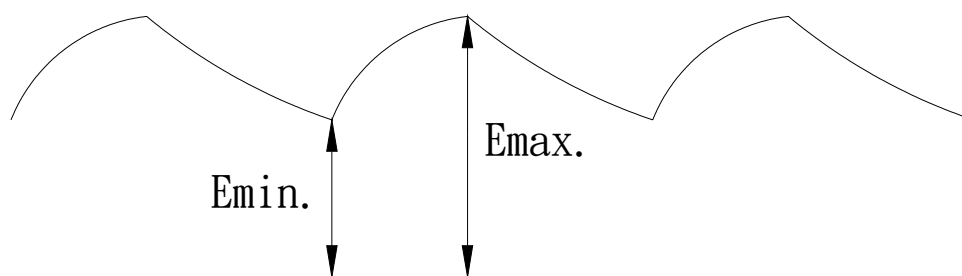
SSR-MOSFET OUTPUT

($I_F=1\text{mA}$)



| E | R |
|------|------------------------|
| 3.3V | Approx. 1.5K Ω |
| 5V | Approx. 3.0K Ω |
| 12V | Approx. 8.7K Ω |
| 15V | Approx. 11.2K Ω |
| 24V | Approx. 18.7K Ω |

- (1) LED forward current must be more than 1mA , at E min.
- (2) LED forward current must be less than 50mA , at E max.



PRODUCT SPECIFICATION

DATE : 01/14/2005

cosmo
ELECTRONICS CORPORATION

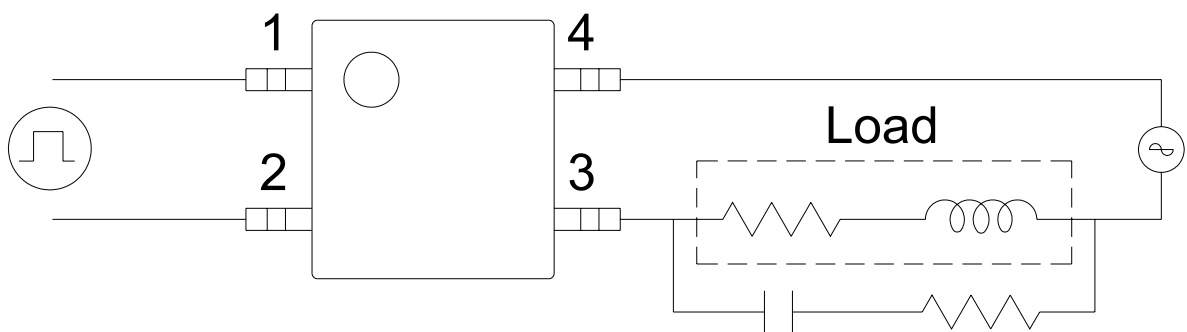
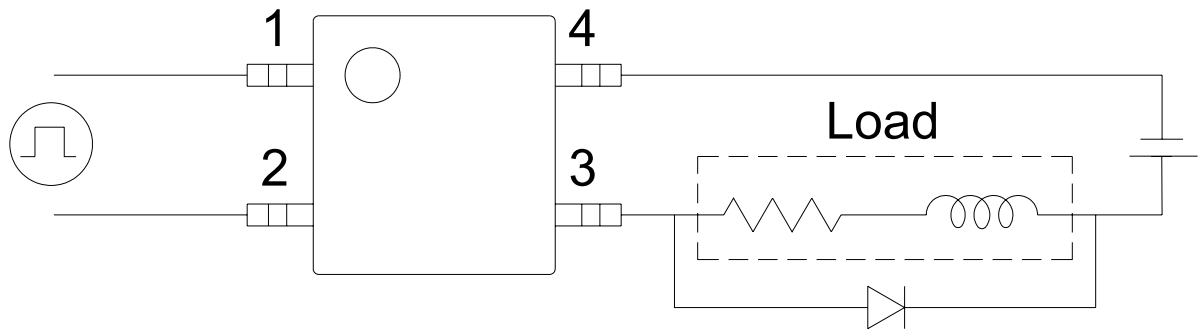
SOLID STATE RELAY - MOSFET OUTPUT
KCP1017

62M00018
SHEET 7 OF 7

REV.
2

● USING METHODS

Regulate the spike voltage generated on the inductive load as follows :



R-C Snubber