



FEATURES:

- RoHS compliant
- 8 Pin DIP Package
- Low ripple and noise
- High efficiency up to 81%
- Operating temperature -40°C to + 85°C
- Input / Output isolation 1000 VDC
- Pin computable with multiple manufacturers
- UL94-VO Package

Models Single output

Model	Input Voltage (V)	Output Voltage (V)	Output Current max (mA)	Isolation (VDC)	Efficiency (%)
AM1P-0505S-NZ	4.5-5.5	5	200	1000	78
AM1P-0509S-NZ	4.5-5.5	9	110	1000	79
AM1P-0512S-NZ	4.5-5.5	12	83	1000	80
AM1P-0515S-NZ	4.5-5.5	15	67	1000	78
AM1P-1205S-NZ	10.8-13.2	5	200	1000	78
AM1P-1209S-NZ	10.8-13.2	9	110	1000	80
AM1P-1212S-NZ	10.8-13.2	12	83	1000	81
AM1P-1215S-NZ	10.8-13.2	15	67	1000	79
AM1P-2405S-NZ	21.6-26.4	5	200	1000	79
AM1P-2409S-NZ	21.6-26.4	9	110	1000	80
AM1P-2412S-NZ	21.6-26.4	12	83	1000	81
AM1P-2415S-NZ	21.6-26.4	15	67	1000	79

Models Dual separated output

Model	Input Voltage (V)	Output Voltage (V)	Output Current max (mA)	Isolation (VDC)	Efficiency (%)
AM1P-050505D-NZ	4.5-5.5	5 / 5	100 / 100	1000	72
AM1P-050909D-NZ	4.5-5.5	9 / 9	55 / 55	1000	75
AM1P-051212D-NZ	4.5-5.5	12 / 12	42 / 42	1000	78
AM1P-051515D-NZ	4.5-5.5	15 / 15	34 / 34	1000	79
AM1P-120505D-NZ	10.8-13.2	5 / 5	100 / 100	1000	74
AM1P-120909D-NZ	10.8-13.2	9 / 9	55 / 55	1000	76
AM1P-121212D-NZ	10.8-13.2	12 / 12	42 / 42	1000	79
AM1P-121515D-NZ	10.8-13.2	15 / 15	34 / 34	1000	80
AM1P-240505D-NZ	21.6-26.4	5 / 5	100 / 100	1000	74
AM1P-240909D-NZ	21.6-26.4	9 / 9	55 / 55	1000	76
AM1P-241212D-NZ	21.6-26.4	12 / 12	42 / 42	1000	80
AM1P-241515D-NZ	21.6-26.4	15 / 15	34 / 34	1000	81

Input Specifications

Parameters	Conditions	Typical	Maximum	Units
Voltage range		4.5-5.5 10.8-13.2 21.6-26.4		VDC
Filter	Capacitor			

Isolation Specifications

Parameters	Conditions	Typical	Maximum	Units
Rated voltage	60 sec	1000VDC		
Resistance		> 1000 MOhm		
Capacitance		60 pF		

Output Specifications

Parameters	Conditions	Typical	Maximum	Units
Voltage accuracy			See tolerance graph	
Short Circuit protection	1sec			
Line voltage regulation (Single)		±1.2 / 1		% of Vin
Line voltage regulation (Dual)		±1.2 / 1		
Load voltage regulation (Single)	Load 10 – 100%		10	%
Load voltage regulation (Dual)	Load 10 – 100%		10	%
Temperature coefficient			±0.03	%/°C
Ripple & Noise		75		m Vp-p

General Specifications

Parameters	Conditions	Typical	Maximum	Units
Switching frequency	100% load	150		KHz
Operating temperature	Without derating	-40°C to +85°C		
Storage temperature		-55°C to +125°C		
Case temperature			90	°C
Cooling	Free air convection			
Humidity	Non condensing		90	%
Case material	Plastic UL94-V0			
Weight		1.8		g
Dimensions		0.46 x 0.39 x 0.3 inches	11.7 x 8.8 x 7.7 mm	
MTBF	>1 000 000 hrs (MIL-HDBK -217F, Ground Benign, t=+25°C)			

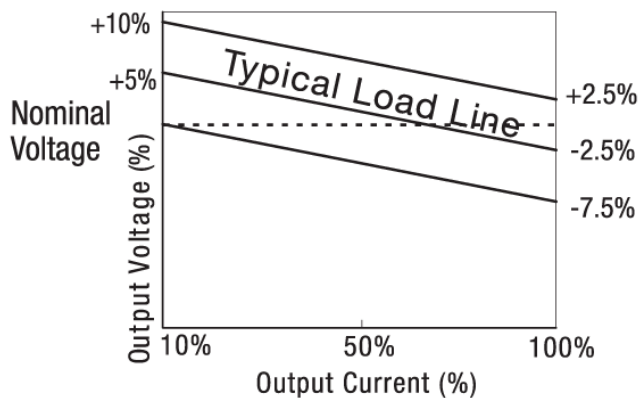
Pin Out Specifications

Pin	Single	Dual Separated
1	- V Input	-V Input
4	+V Input	+V Input
5	+V Output	+V1 Output
6	No pin	-V1 Output
7	-V Output	+V2 Output
8	No pin	+V2 Output

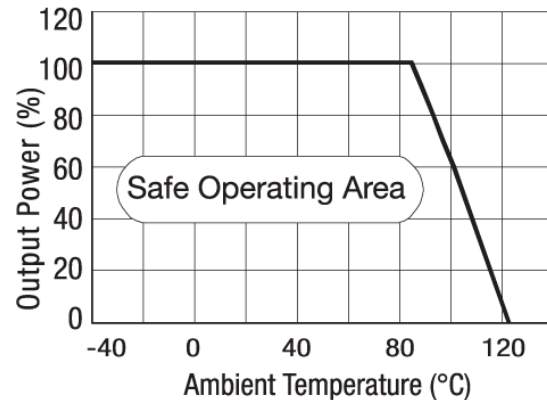
External capacitor

Vin (VDC)	External capacitor (uF)	Vout (VDC)	External capacitor (uF)
5	4.7	5	10
12	2.2	9	4.7
24	1	12	2.2
-	-	15	1

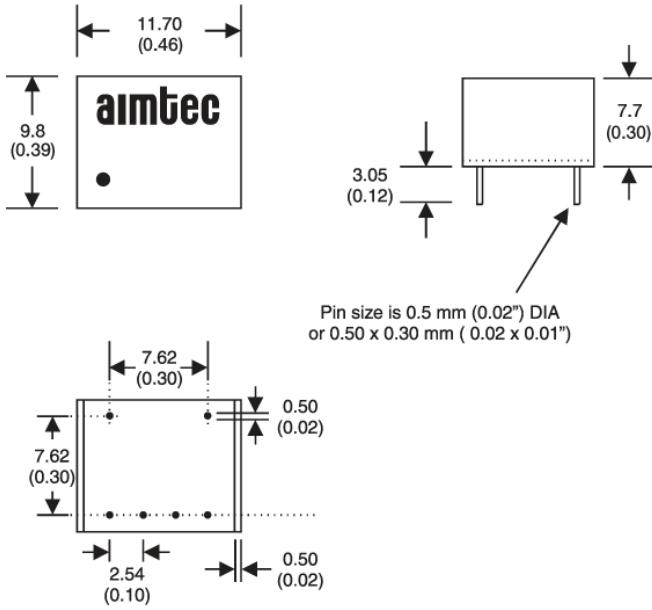
Tolerance Envelope Graph



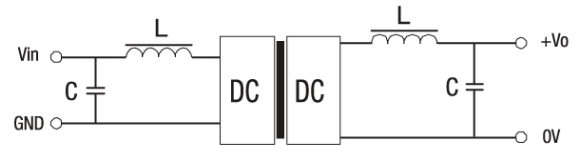
Temperature Derating Graph



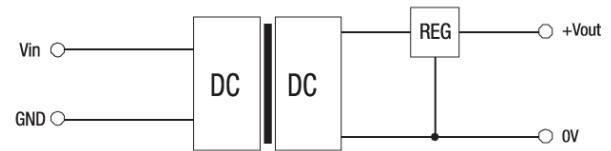
Dimensions



Filtering



<Figure 1>



<Figure 2>